



# MOVE MORE. FARTHER. WITH LESS.

## MHC SERIES MATERIAL HANDLING CARS

**Loram's MHC Series Material Handling Cars** are ideal for any project involving transferring and offloading of new ballast, or excavated roadbed materials such as ballast and spoils. Featuring a powerful, integrated transfer conveyor based on proven Loram components, the MHC Series provides a continuous, high-throughput flow of material for maximum productivity.

The MHC Series are available in two models — the MHC60 with 60 cubic yard hopper capacity, and the MHC80 with 80 cubic yard hopper capacity. In comparison to other material handling cars on the market, the MHC Series offers a unique combination of reduced tare weight and increased material throughput capability. MHC Series cars exceed industry-standard throughput by up to 30% and can self-discharge material up to 20% farther. They can connect to and receive material from undercutters, shoulder ballast cleaners, ditch cleaners, Railvacs, specialty excavators, material handling cars and other equipment.

The variable-speed transfer conveyor uses up to 90 hp to discharge ballast at a higher rate of productivity, while preventing stalling. The MHC Series cars are designed to accommodate materials ranging from AREMA-specification ballast, to the most heavily-fouled, water-saturated ballast and spoils.

### FEATURES AT A GLANCE

- **High capacity** 60 yd<sup>3</sup> (45 m<sup>3</sup>) or 80 yd<sup>3</sup> (60 m<sup>3</sup>) hopper
- **Up to 30% higher** average material throughput than competitive cars
- **20% further discharge** / cast distance than the competition
- **Adjustable floor conveyor speed** from 0 – 85 ft/min (0 – 26 m/min)
- **High capacity** up to 190,000 lb (86,000 kg)
- **Direct drive pumps and motors** for reduced maintenance and operating costs
- **Designed with fewer parts** and easier, operator-level maintenance

For more information on this machine, or on developing a tailored maintenance program for your railroad, contact Loram at **1-800-328-1466** or visit **LORAM.COM**



# SPECIFICATIONS

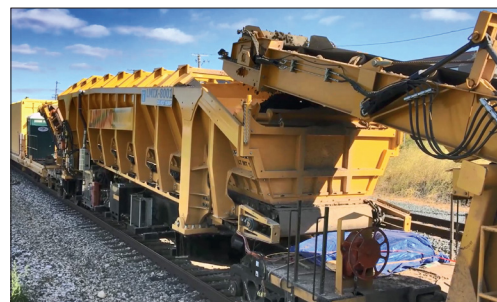
## LORAM MHC SERIES MATERIAL HANDLING CARS

	MHC60	MHC80
Length		
Over Pulling Faces	60 ft (18.2 m)	68 ft (20.6 m)
Over Conveyor	73 ft (22.3 m)	81 ft (24.7 m)
Width	10 ft (3.1 m)	10 ft (3.1 m)
Height	13.5 ft (4.1 m)	13.5 ft (4.1 m)
Weight (Tare)	89,500 lb (40,400 kg)	95,000 lb (43,000 kg)
Hopper Capacity	60 yd <sup>3</sup> (45 m <sup>3</sup> )	80 yd <sup>3</sup> (60 m <sup>3</sup> )
Weight Capacity	190,000 lb (86,000 kg)	190,000 lb (86,000 kg)
Throughput Rate	1,570 yd <sup>3</sup> /hr (1,200 m <sup>3</sup> /hr)	1,570 yd <sup>3</sup> /hr (1,200 m <sup>3</sup> /hr)
Transfer Conveyor Cast Distance	Up to 23 ft (7 m) from either side of track center or into an auxiliary car	Up to 23 ft (7 m) from either side of track center or into an auxiliary car
Floor Conveyor Speed	Variable; 0 – 85 ft/min (0 – 26 m/min)	Variable; 0 – 85 ft/min (0 – 26 m/min)

*Specifications subject to change*

### MHC Series Additional Features & Benefits:

- Diesel engine hydraulic power unit allows the hopper and transfer conveyors to operate without being connected to an external power unit, resulting in the ability to discharge ballast at a higher rate of productivity with less equipment and personnel resources
- Transfer conveyor shifts from high-speed cast to low-speed and double-torque to prevent overloading the conveyor
- A design for operator-level maintenance with:
  - Consolidated grease points
  - Easy access to all fluid filters
  - Accessible electrical enclosures
- AAR 400 & 401 compliant
- All electrical components have molded plugs to allow for easy disconnect, service, or replacement if needed
- Interchangeable with additional material handling cars
- Capability to work with ballast management equipment from other providers



### SERVICE & SUPPORT

With a 60-year plus legacy of serving the railroad industry with the most advanced technologies, the most reliable and productive maintenance of way equipment and world-class contract service work, Loram brings its partnership approach to every customer relationship. This includes an extensive training and technical support program with every machine. Whether for a heavy haul, high-speed, underground or metro-rail system, Loram has the equipment and services you need.

For more information on this machine, or on developing a tailored maintenance program for your railroad, contact Loram at **1-800-328-1466** or visit **LORAM.COM**



LORAM.COM | 1-800-328-1466  
SALES@LORAM.COM | 763-478-6014  
3900 ARROWHEAD DRIVE | HAMEL, MN 55340 USA