



MOVE MORE. FARTHER. WITH LESS.

MHC SERIES MATERIAL HANDLING CARS

Loram's **MHC Series Material Handling Cars** are ideal for any project involving transferring and offloading of new ballast, or excavated roadbed materials and spoils. Featuring a powerful, integrated transfer conveyor based on proven Loram components, the MHC Series provides a continuous, high-throughput flow of material for maximum productivity.

The MHC Series cars are available in three models — the MHC50 with 50 cubic yard (38 m³) hopper, the MHC60 with 60 cubic yard (45 m³) hopper capacity, and the MHC80 with 80 cubic yard (60 m³) hopper capacity. In comparison to other material handling cars on the market, the MHC Series offers a unique combination of reduced tare weight and increased material throughput capability. MHC Series cars exceed industry-standard throughput by up to 30% and can self-discharge material up to 20% farther. They can connect to and receive material from undercutters, shoulder ballast cleaners, ditch cleaners, vacuum machines, material handling cars and other equipment.

The variable-speed transfer conveyor delivers an industry-leading 67 kW (90 hp) to discharge material at a higher rate of productivity while preventing stalling. The MHC Series cars are designed to accommodate materials ranging from UIC/AREMA-specification ballast, to the most heavily-fouled, water-saturated ballast and spoils.

FEATURES AT A GLANCE

- **High capacity** 50 yd³ (38 m³), 60 yd³ (45 m³) or 80 yd³ (60 m³) hopper
- **Up to 30% higher** average material throughput than competitive cars
- **20% farther discharge** / cast distance than the competition
- **Adjustable floor conveyor speed** from 0 – 26 m/min (0 – 85 ft/min)
- **High capacity** up to 86,000 kg (190,000 lb)
- **Direct drive pumps and motors** for reduced maintenance and operating costs
- **Designed with fewer parts** and easier, operator-level maintenance

For more information on this machine, or on developing a tailored maintenance program for your railroad, contact Loram at **+61 1800 059 955** or visit **LORAM.COM.AU**

SPECIFICATIONS

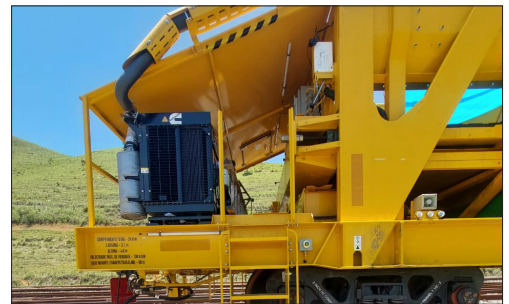
LORAM MHC SERIES MATERIAL HANDLING CARS

	MHC 50	MHC 60	MHC 80
Length			
Over Pulling Faces, m (ft)	18.9 (62)	18.2 (60)	20.6 (68)
Over Conveyor, m (ft)	22.9 (75)	22.3 (73)	24.7 (81)
Width, m (ft)	2.8 (9.3)	3.1 (10)	3.1 (10)
Height, m (ft)	3.9 (12.8)	4.1 (13.5)	4.1 (13.5)
Tare Weight, MT (Ton)	44 (40)	41 (45)	43 (48)
Hopper Capacity, m³ (yd³)	40 (50)	45 (60)	60 (80)
Weight Capacity, MT (Ton)	55 (50)	86 (95)	86 (95)
Throughput Rate, m³/hr (yd³/hr)	900 (1,270)	1,200 (1,570)	1,200 (1,570)
Discharge Distance, m (ft)	6 (20)	7 (23)	7 (23)
Compliance	EN / UIC	AAR / FRA	AAR / FRA
Maximum Floor Conveyor Speed, m/min (ft/min)	Variable up to 26 (85)		

Specifications subject to change

MHC Series Additional Features & Benefits:

- Diesel engine hydraulic power unit allows the hopper and transfer conveyors to operate without being connected to an external power unit, resulting in the ability to discharge ballast at a higher rate of productivity with less equipment and personnel resources
- Transfer conveyor shifts from high-speed cast to low-speed and double-torque to prevent overloading the conveyor
- A design for operator-level maintenance with:
 - Consolidated grease points
 - Easy access to all fluid reservoirs and filters
 - Accessible electrical enclosures
- EN 14033 compliant (MHC 50)
- AAR / FRA compliant (MHC 60 and MHC 80)
- All electrical components have molded plugs to allow for easy disconnect, service, or replacement if needed
- Interchangeable with additional material handling cars
- Capability to work with ballast management equipment from other providers
- Fully enclosed cab for operating in adverse conditions



SERVICE & SUPPORT

With a 70-year legacy of serving the railroad industry with the most advanced technologies, the most reliable and productive maintenance of way equipment and world-class contract service work, Loram brings its partnership approach to every customer relationship. This includes an extensive training and technical support program with every machine. Whether for a heavy haul, high-speed, underground or metro-rail system, Loram has the equipment and services you need.

For more information on this machine, or on developing a tailored maintenance program for your railroad, contact Loram at **+61 1800 059 955** or visit **LORAM.COM.AU**



LORAM.COM.AU | +61 1800 059 955
 ENQUIRIESPTY@LORAM.COM.AU
 LEVEL 10 | 239 GEORGE STREET | BRISBANE, QLD 4000 AUSTRALIA

MHC V4 INTL | 1024

©2024 Loram Maintenance of Way, Inc.